



Who Has the Time?

A Guide to Maximizing Instructional Hours

Time is precious: Give teachers back the time they need

Teaching is a unique vocation and those who choose it will give a myriad of reasons as to why. But a common theme is they want to make a difference in the lives of students. However, effective teaching requires hours of time beyond instruction spent on tasks like administering assessments, planning lessons, differentiating instruction, and monitoring progress—all of which are critical to student success. This time away from instruction impacts teachers’ time with students.

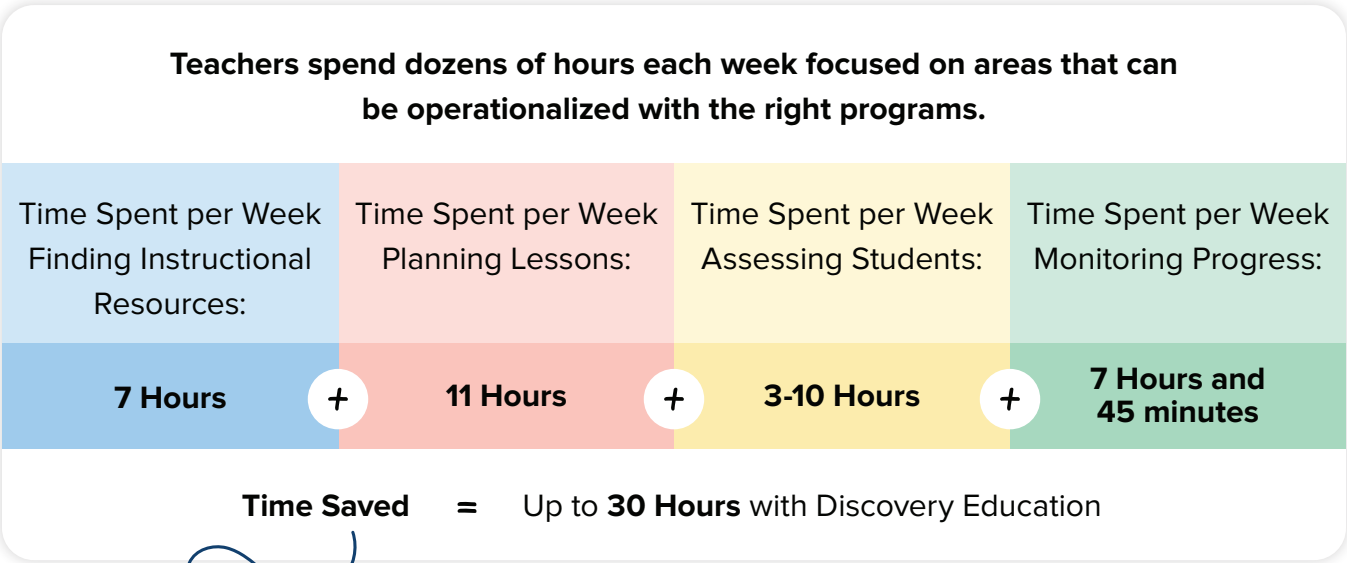
A [recent survey](#)ⁱ from Merrimack College showed that classroom teachers work an average of 54 hours per week, yet only 25 of those hours are spent directly teaching students. Over half of teachers’ time is used on planning and preparation, grading student work, administrative tasks, and other activities.

A similar [survey](#)ⁱⁱ showed that nearly half of teachers say their mental health is negatively affecting their work. It’s easy to see the correlation between how teachers spend their time and their mental health. Leaders can consider making tasks easier for teachers to significantly enhance their overall well-being and job satisfaction.



By providing teachers with engaging curated content and adaptive, personalized learning solutions that track, report, and respond to student needs in real time, leaders empower them to focus more on direct instruction, engaging with students, coaching learners, and practicing their craft.

Discovery Education saves educators hundreds of hours by automatically providing formative assessments, differentiating instruction based on student behavior, offering grab-and-go lessons and activities, and reporting student engagement and progress every step of the way.



Results: Improved teacher confidence, satisfaction, and overall well-being

Enhancing Instruction

Researchⁱⁱⁱ Indicates:

Teachers spend seven hours per week searching for instructional resources (both free and paid-for) to supplement their existing curriculum. When selecting these resources, they must consider age and grade appropriateness, standards alignment, relevance to student interests, and content accuracy.



Time Spent per Week
Finding Instructional
Resources:
7 Hours

How Discovery Education Helps:

Teachers using Discovery Education can easily access a large treasury of multi-modal, curated content to nurture students' curiosity and provide engaging learning experiences. Developed by education experts and in partnership with industry leaders like the NBA, Sesame Street, Boeing, and Guy Harvey Foundation, teachers can select Virtual Field Trips, text-based passages, interactives, audio, podcasts, and images across all grades, subjects, and critical topics of today. Our high-quality core and supplemental curriculum content supports a wide variety of subjects and cross-curricular learning needs like STEAM.

Discovery Education is truly a lifesaver for teaching! There are so many easy-to-find and use resources to help educators plan and deliver lessons as well as support students at whatever level they are at and in all subjects.



Teacher, CA



A Deeper Look

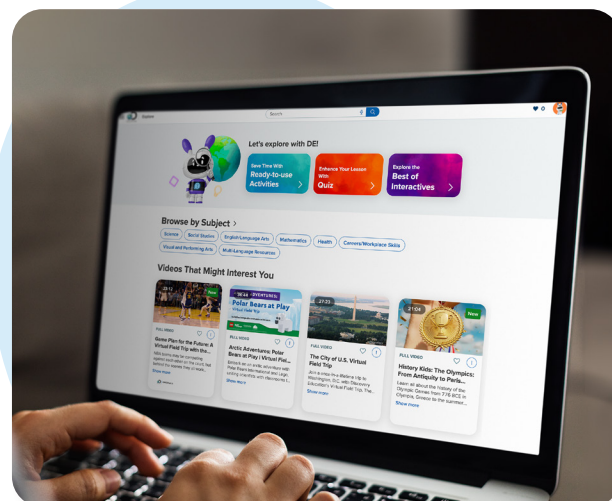
Finding engaging, high-quality content in Discovery Education is easy, fast, and reliable. All content from Discovery Education is research-backed and vetted by educational experts. The content is highly curated and paired with embedded teaching resources that fit right into the curriculum to ensure teachers can confidently deliver impactful digital learning experiences.

Discovery Education Experience

With just a few clicks on the My DE homepage in the *Experience* platform, teachers can access personalized content recommendations based on grade levels, subjects, and interests. Discovery Education regularly adds hundreds of new resources specially curated for educators to meet relevant teaching opportunities and moments that their students can relate to and see themselves in. The platform's advanced, intuitive search capabilities empower teachers to find and preview the resources they need and follow the path to related materials and instructional support. They can filter results by grade level or resource type, as well as by language, Lexile and reading levels, and other support features like closed captioning and translations.

DreamBox Reading Plus

With DreamBox Reading Plus, teachers can access comprehensive online and printable materials to support direct instruction and differentiation. The Reading Plus management system provides integrated teaching tools, including video tutorials, printable worksheets, graphic organizers, and lesson plans, so teachers always have the right resources at the right time.



reading plus
GRAPHIC ORGANIZERS

Relationship Skills

Communicating Effectively

NAME: _____
CLASS: _____

Relationship Building

Rate Yourself

1	2	3	4	5
Need to work on it	OK	Average	Good	Excellent
What is your score for building and keeping relationships with friends and important people in your life? _____				
Provide an example of a time where listening skills were key to supporting a good relationship: _____ _____ _____				
What do effective communication skills look like when you are working in a group? _____ _____ _____				
Why are good communication skills important in relationships? _____ _____ _____				

www.readingplus.com Copyright © 2021 Reading Plus LLC. All Rights Reserved.

Planning Lessons and Differentiating Instruction

Research Indicates:

In a survey conducted by McKinsey, teachers [report](#)^{iv} spending an average of 11 hours per school week preparing and planning lessons. Educators agree that effective instruction is not one-size-fits-all. However, classroom teachers simply do not have the time or bandwidth to plan lessons and differentiate instruction for every student. [49%](#)^v of teachers cite a lack of time and resources as the most significant challenge for differentiating instruction.



Time Spent Per Week
Planning Lessons:
11 Hours

How Discovery Education Helps:

Discovery Education saves teachers time by providing ready-to-use cross-curricular activities for whole-group, small-group, or independent instruction, and delivers differentiated instruction in real time as students work independently on their math and reading skills. Each technology solution offers a wealth of built-in teacher supports to help with instructional strategies, ways to engage students, and how to differentiate and support student learning.

Reading Plus is efficient and allows for individualization and differentiation. Lessons are short and effective. Even given additional planning time, I couldn't begin to replicate the instructional design of Reading Plus. My students report greater success with assigned reading as they 'don't take as long and understand it better.' They are more efficient and strategic silent readers.



Patty Sullivan,
Middle School Teacher
Falmouth School District, ME



A Deeper Look

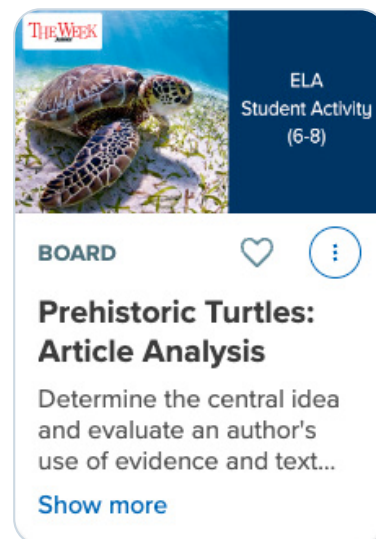
Discovery Education *Experience*

Ready-to-use activities combine high-quality content with SOS Instructional Strategies, offering educators fast, constructive, and engaging activities for independent, group, or whole-class instruction. These turnkey assignments include lesson starters, background builders, curiosity builders, writing prompts, choice boards, and more. Teachers can quickly assign the content or easily customize activities further in the Studio tool.

Teachers can then differentiate instruction with *Experience*'s multimodal content that accommodates multiple learning styles, degrees of readiness, and interests. The high-quality learning resources offer embedded differentiation and language support tools to bolster the learning experience. Resources can also be curated on a Studio Board, which can then be differentiated and assigned to individuals, small groups, or used for whole-group instruction.

DreamBox Math and Reading

DreamBox programs use adaptive technology to provide the right lessons and support for students at the right time. With real-time scaffolding, extra practice for skill gaps, and content delivered in a way that makes sense to each student. The programs capture critical information for every interaction, decision, approach, and answer. It then adjusts instruction in real-time to provide targeted scaffolding and differentiated support. Students experience meaningful instruction personalized to their needs from day one.



Assessing Students

Research^{vi} Indicates:

Over 70% of teachers report devoting 3-10 hours per week to delivering assessments. Teachers must also consider the quality of the questions, the timing of the assessments, and the age-old task of grading. When you combine these elements of assessing with those mandated by school site leaders, districts, and even states, there is even more pressure to assess properly, precisely, and meaningfully.



Time Spent per Week
Assessing Students:

3-10 Hours

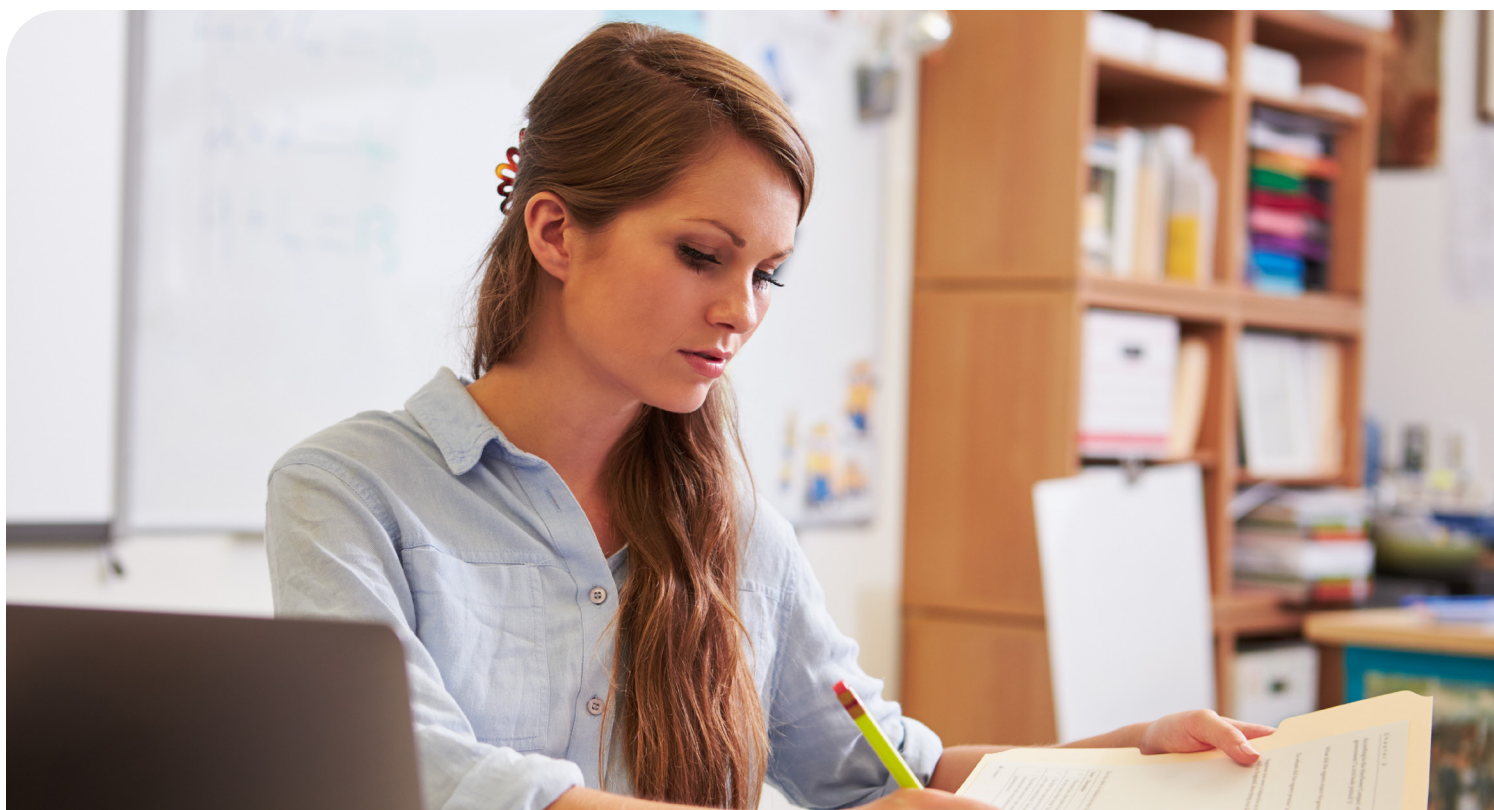
How Discovery Education Helps:

Discovery Education helps educators streamline assessment processes, whether they are creating a quiz to check for understanding, determining which standards students need more support, or placing students in the right cohorts for small group instruction.

The Discovery Education quiz feature enables monitoring of comprehension or conceptual understanding, not just compliance. Students can self-monitor for personal learning goals (metacognition), or the teacher can use this feature as a formative assessment tool to discover the best next steps for differentiation.



Lea Bartch,
Coordinator of Science and Social Studies
Murfreesboro City Schools, TN



MEANINGFUL ASSESSMENTS

A Deeper Look

Benchmark and Placement Assessments

DreamBox programs place students at the right level as soon as they begin their learning journey. DreamBox Math's placement assessment, [Launchpad](#), only takes minutes and mimics the gamified DreamBox Math experience. Launchpad provides educators with a baseline about student understanding and efficiently places students in the curriculum.

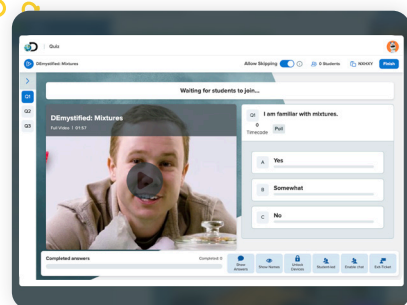
DreamBox Reading Plus leverages a powerful built-in assessment, [InSight](#), to place students and measure progress after program usage. InSight is strongly correlated to multiple state assessments, and it is the only reading assessment that measures motivation.

Formative Assessments

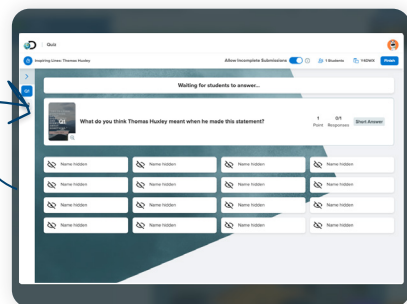
DreamBox programs also use adaptive software to provide ongoing and formative assessments that respond with the appropriate instruction in the moment. As students work, DreamBox measures student progress right in the platform without disrupting instruction or causing test anxiety.

Discovery Education *Experience*

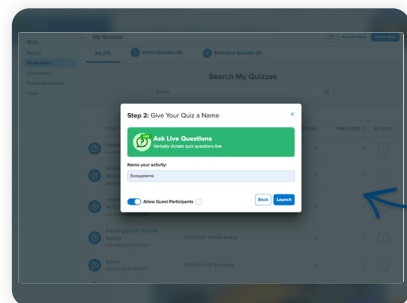
Within Discovery Education *Experience*, teachers can take advantage of the Quiz Library full of pre-built quizzes to help save time. They can also create engaging multimedia quizzes to check for understanding in real time. Quiz gives teachers three intuitive ways to promote active learning every day and track student progress in the moment.



Video Quiz: Choose a video from our treasury of high-quality content and embed questions on the viewing timeline. This keeps students engaged while also keeping a pulse on their learning.



Standard Quiz: Check for understanding and student readiness with a range of question formats, from polling to open-ended, multiple-choice to image annotation.



Ask Live Quiz: Ask interactive questions live and share responses virtually or in person to spark lively discussions and class participation. Students can respond on their own devices making these quizzes easy to launch and easy to track.

Monitoring Student Progress

Research Indicates:

Teachers report spending [15 minutes](#)^{vii} per day preparing reports and tracking data and [6.5 hours](#)^{viii} per week evaluating and providing feedback on student work.

How Discovery Education Helps:

Discovery Education provides educators at multiple levels with robust reports about student progress, tool usage, growth within subject areas, and exit ticket results for activities. This data helps inform instruction, so educators know where to accelerate or remediate instruction, and which areas students are engaged and excited about learning. With the support of Discovery Education, teachers can easily design and deliver learning experiences they can rely on to engage their students and accelerate their learning.

Teachers find the data and reporting from DreamBox Math easy to access, and the information provided on student progress drives instruction in the classroom. Thank you for making a program that promotes skill and keeps students engaged.



Robin Russell,
Teacher
Bellingham School District, WA



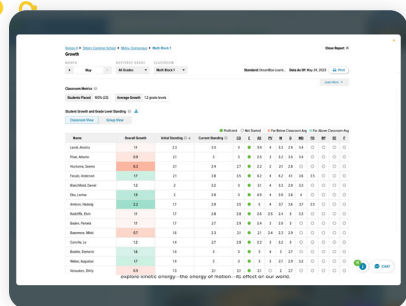
Time Spent per Week
Monitoring Student
Progress:
**7 hours and 45
minutes**



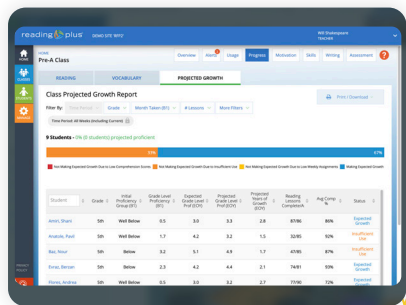
A Deeper Look

DreamBox Math and Reading

DreamBox reports allow teachers to monitor student progress daily and track results over time. The rich data captured within DreamBox programs empower educators to identify, track, and address unseen and unheard learning loss in just clicks. With the intuitive math and reading reports in DreamBox, teachers can obtain a clear understanding of each student's strengths and improvement opportunities, leverage recent, relevant, and granular growth data to inform daily small-group instruction, and immediately determine if students are making progress toward academic goals.



With [DreamBox Math's Growth Report](#), teachers don't need to wait until test day to know where students are on the learning journey. Updated daily, the Growth Report provides comprehensive insight into student progress in each domain according to state standards, based on the most recent data from the platform. The powerful report enables educators to access the most up-to-date, actionable data between test windows.



[DreamBox Reading reports](#) empower teachers to determine where their students are in achieving reading proficiency, what areas to focus on for each student, group, or at a classroom level, and gain insight into how to help students use programs with fidelity. Within DreamBox Reading, teachers can monitor lesson completion, average comprehension scores, combos, and total instructional time. The program also alerts teachers if a student needs immediate attention within a focus area.



Discovery Education Experience

The My Classrooms Dashboard is designed to save teachers time and effort in monitoring the completion of assignments created within *Experience*. Teachers can view results for any assignment at the class and student levels to keep a pulse on their learning. Details such as start and end dates, assignment completion progress, and more can be viewed for the class, for each assignment, and for individual students.

Time-Saving Solutions from Discovery Education Support Teachers Throughout Their Day

Our engaging, effective, and easy-to-use solutions help every school district accelerate student growth, scale teacher impact, and motivate learning every day. Industry-leading educational content, digital-first curriculum, personalized learning programs, and time-saving instructional tools enhance teaching and learning across core subjects.



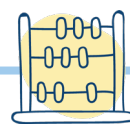
Experience



Literacy



Science



Math



Social Studies

References

i <https://www.edweek.org/research-center/reports/teaching-profession-in-crisis-national-teacher-survey>

ii <https://www.merrimack.edu/academics/education-and-social-policy/about/merrimack-college-teacher-survey>

iii <https://www.prnewswire.com/news-releases/two-new-mdr-research-reports-from-the-ednet-k-12-market-series-reveals-rapid-changes-in-educational-technology-and-the-relationship-between-k-12-educators-and-the-education-industry-300401962.html>

iv <https://www.mckinsey.com/industries/education/our-insights/how-artificial-intelligence-will-impact-k-12-teachers>

v <https://acrobat.adobe.com/id/urn:aaid:sc:US:8f1568f2-ab87-4099-9806-f57e2743cec7>

vi <https://files.eric.ed.gov/fulltext/ED621761.pdf>

vii https://www.scholastic.com/primarysources/pdfs/Gates2012_full.pdf

viii <https://www.mckinsey.com/industries/education/our-insights/how-artificial-intelligence-will-impact-k-12-teachers>



Ready to give valuable time back to your teachers and engage students? Learn how Discovery Education can fit within your classrooms at discoveryeducation.com/maximize-time

1.800.323.9084
EducationPartnerships@discoveryed.com