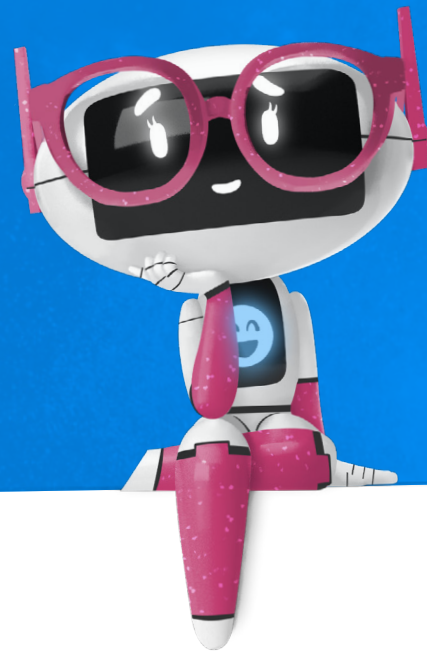




# How Discovery Education Aligns to ESSER Goals



Discovery Education's dynamic learning platform and curriculum and supplemental programs seamlessly integrate high-quality content, instructional tools and strategies, and professional learning into the work educators do every day. By focusing on equity, engagement, and access we can empower districts to maximize ESSER fund investments and make a lasting impact on student success.

---

## How Discovery Education Solutions Align to ESSER Allowable Uses

The following goals support the allowable uses outlined in the CARES (ESSER I), CRSSA (ESSER II), and ARP (ESSER III) Acts. A partnership with Discovery Education will ensure your investment of ESSER funds are meeting the needs identified in each goal and have an impact on teachers and students.



## Goal: Address Equity in Education for All Learners

---

### **ESSER Allowable Use:**

Address the specific needs of disadvantaged students, including those living in poverty, learning English, experiencing homelessness, dealing with disabilities or living in foster care.

### **How We Align:**

- Provide culturally authentic, relevant content that reflects the diversity of today's students and connects them to real-world topics.
- Work closely with trusted organizations and industry leaders focused on positive social impact and equity in education.
- Offer curriculum and content available in multiple languages, including Spanish.
- Curate the English Language Learner Center dedicated to supporting ELL students.
- Integrate accessibility and literacy support with Text-to-Speech, Microsoft Immersive Reader, Core Interactive Tools, translation options, and closed-captioning in multiple languages.



## Goal: Accelerate Learning to Mitigate Gaps

---

### **ESSER Allowable Use:**

Address student learning loss and support differentiated instruction through interactive, evidence-based approaches, which can include reliable assessments and distance learning equipment.

### **How We Align:**

- Accelerate learning with targeted lessons that can be assigned to individual or groups of students.
- Enable teachers to group students to address each child's learning needs for small-group instruction or one-on-one.
- Ensure our curriculum builds strong foundational knowledge and academic vocabulary while focusing on grade-level content.
- Promote interactive learning and monitor student progress in real-time with a suite of quiz- and activity-building tools.
- Support differentiated instruction with scaffolded instructional strategies, ready-to-use lessons, presentation templates, and interactive lesson activities.



## Goal: Enhance Student Enrichment and Summer Learning Programs

### ESSER Allowable Use:

Planning and implementing activities related to summer learning and supplemental afterschool programs, including providing classroom instruction or online learning.

### How We Align:

- Strengthen summer learning through year-round academic support.
- Offer anytime, anywhere access to curated collections of real-world content that engage students beyond the classroom.
- Partner with trusted organizations to create and deliver resources that support summer learning, afterschool, extended hours, and career prep programs.
- Provide students access to exciting learning opportunities from trusted partners, including Boeing, Takeda, 3M, Country Music Association, and many more.
- Deliver on-demand professional learning that connects educators with best practices to help them prepare for the next school year and beyond.



## Goal: Provide A Continuity of Learning for All Environments

### ESSER Allowable Use:

Purchase educational technology (including hardware, software, and connectivity) for students that aids in regular, engaging, and substantive educational interaction between students and their classroom instructors.

### How We Align:

- Secure uninterrupted learning from any device through a safe, flexible platform.
- Ensure access to high-quality, timely, and relevant content that actively engages students and maximizes instructional time.
- Empower teachers to facilitate instruction in content area skill-building, academic vocabulary, and inquiry-based learning that can be integrated into existing curriculum or used as a stand-alone.
- Allow teachers to easily create classes, plan lessons, and assign content through one platform.
- Seamlessly integrate with SSO providers and Learning Management Systems to provide simple, secure access, opportunities for collaboration across platforms, and embedding of content with lessons.



## Goal: Support the Whole Child and Social-Emotional Wellbeing

---

### **ESSER Allowable Use:**

Provide mental health services and supports.

### **How We Align:**

- Curate learning content that promotes positivity and resilience.
- Combine learning with social and emotional development through the SEL Center's hands-on activities and engaging content.
- Support teachers with lessons on self-awareness and reflection that help increase understanding and empathy and give students context to the world around them.
- Provide a variety of content collections from trusted organizations that focus on physical, mental, and social wellbeing.



## Goal: Support and Empower All Educators

---

### **ESSER Allowable Use:**

Provision of the resources necessary to address the needs of their individual schools to principals and other school leaders.

### **How We Align:**

- Deliver SSO integration with existing platforms and systems so teachers have a simplified digital experience.
- Offer customized professional learning services, whether in person, hybrid, virtual, or on-demand, that support the unique needs of each school and district.
- Support teachers with social-emotional learning opportunities designed for educators.
- Save teachers time and effort with ready-to-use resources, engaging content, and easy-to-use assessment tools.
- Empower teachers to connect and collaborate with one another through a global network of like-minded educators.

# EdTech Solutions from Discovery Education

Trusted for over 20 years, Discovery Education brings innovative [research-based](#) products and services with proven impact to educators around the world.

## Discovery Education Learning Platform

As the foundation to our core curriculum and supplemental packs, our award-winning PreK-12 learning platform is one secure place teachers can rely on to deliver the most engaging, real-world learning experiences to all students, in any environment.



### Supports Teachers

Embedded instructional support, grab-and-go materials, and on-demand professional learning empower teachers.



### Engages Students

High-quality, diverse content drives student engagement through real-world connections and active learning opportunities.



### Enhances Equity

Secure integrations combined with language, literacy, and accessibility support enhance learning opportunities for all students.

## Discovery Education Core and Supplemental Offerings



## Additional Educator Support Services



## Let's chat about your funding goals

Learn how a partnership with Discovery Education can help shape long-term investments in equitable, quality education for your students.

[Get in Touch](#)